



**J Smucker Contracting's Semiannual Preventative Maintenance** plan offers you piece of mind and helps to ensure a worry-free, long-lasting roof. Regularly scheduled maintenance of your commercial roof is an essential step to protecting it from damage and extending its lifespan.

## Our Semi Annual Preventative Maintenance Plan Includes:

### ✔ Semi Annual Preventative Maintenance Inspections

- Complete roof inspection of all roof sections. Looking for any damage or excessive wear that has occurred since last inspection
- Clean roof of any debris, including blowing/cleaning areas where dirt and dust accumulates from ponding water
- Inspect and clean drains of debris. If drains are blocked below roof line, you, the client, will be advised
- Inspect all flashings at all penetrations and curbs, including pipes, skylights, walls, etc.
- Inspect and clean all gutters and downspouts
- Re-secure loose single ply seams and reseal cracked or missing caulk joints (where needed)
- Advise you, the client, of any additional repairs needed that fall outside of the scope of this agreement

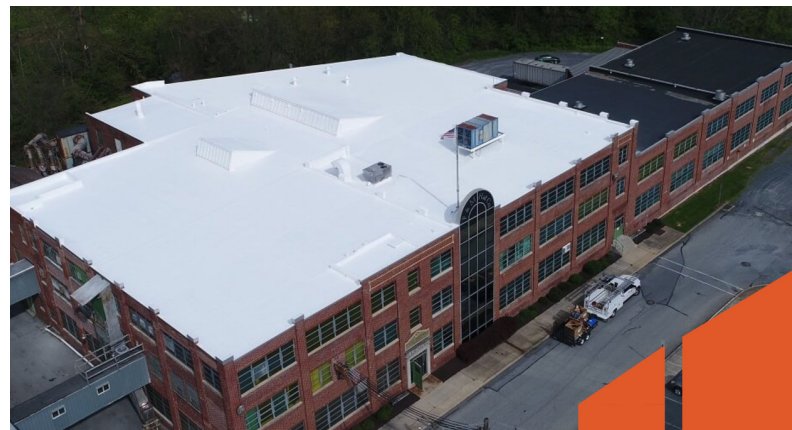


### ✔ Priority Emergency Leak Response Guarantee

- We will let you know we have received your call/email within 2 business hours, or 12 hours if outside of normal business hours
- We will have a tech out to your property within 72 business hours of that acknowledgment
- If we fail to meet those two promises, your next invoice from us will be 25% off

### ✔ Superior Communication

- Call from tech when in route to your property, usually 1 hour notice
- Speak with you, on-site, before and after repairs are completed to go over visit
- Detailed picture report of every visit, detailing everything that was done and seen, emailed to you upon completion of visit



**Contact Sales:**  
717-768-0339

[www.jsmuckercontracting.com](http://www.jsmuckercontracting.com)  
160 Cambridge Rd, Gap, PA 17527